



# Greyhound Rescue Wales E-Newsletter

September 2009

Charity No. 1059733

## In This Issue

- A La Bark Cookbook
- September Show
- Psychic Evening

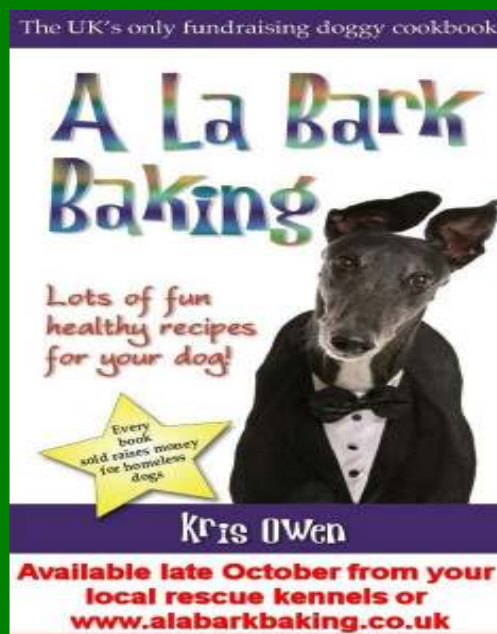
## Welcome to the September newsletter

This month's newsletter is focused on the annual show at Pembrey Country Park. We hope to see you there, and in light of the recent appalling weather, hope Alain is doing his amazing anti-rain dance, which gave us glorious sunshine last year.

We've also got our usual eclectic mix with a new dog cookery book (a charity fundraiser) and a psychic evening to benefit GRW in October. Something for everyone!

---

## A La Bark Cookbook



We're delighted to promote the A La Bark Baking Cookbook, full of healthy doggy recipes and designed specifically to raise money for greyhound rescue organisations nationally. For more details go to the

website [www.alabarkbaking.co.uk](http://www.alabarkbaking.co.uk) - this would make a fabulous Christmas present. Kris Owens the author has dedicated one of the recipes to one of our Sponsor Dogs, Lady, so why not try her delicious Lamb Meatloaf?

---

## Psychic Evening - Saturday 24<sup>th</sup> October 2009

We're very pleased to announce that on Saturday 24<sup>th</sup> October, renowned international psychic Paula Wood will be hosting a Psychic Evening at the Commercial Hotel, Cilfynydd (where we hold our AGM). Doors open at 7 p.m. and the evening begins promptly at 8 p.m. The evening will be a benefit for Greyhound Rescue Wales and we'll also have our merchandise table set up. Tickets are £5 in advance or £6 on the door. We think this is likely to be a popular evening so recommend getting your tickets early.

Click [here](#) for link to Commercial Hotel website.

To book your tickets in advance, please send an SAE and a cheque made payable to Greyhound Rescue Wales covering the amount needed to The Secretary, GRW, 83 Spencer David Way, St. Mellons Cardiff CF3 0QB. Your tickets will then be returned to you by post. Alternatively, please keep an eye on the website for where you can buy tickets in person.

If you can't make the evening event, and would like to book a private sitting with Paula, you can contact her on (02920) 635481.

## Annual GRW Show - Sunday 13<sup>th</sup> September

The final preparations are under way for our annual show at Pembrey. A number of local animal charities have been invited and the class list is even bigger and better. All child handler entrants will receive a rosette and this year we have new trophies for some of our classes.

One of these is the Rocky And Mr Puw Memorial Shield, awarded for Class 7, the best Veteran Rescue Dog. We're hoping the donor will be available on the day to present it. The story behind it is that the trophy has been donated in memory of two very special dogs, Mr Puw and Rocky. Sadly, neither dog is with us now but we hope their memory will live on via this beautiful trophy tribute, a very special way to commemorate happy times with two special dogs, who in life were close friends.

We are also very grateful to Discount Animal Foods, who will have a stall at the show on the day, for donating a trophy for the Best in Show class.

We've also added some new classes for the novelty show which we think will be fun. There's a Baldie Butt (or as the Americans say, Shiny Hiney!) which is for all those lovely greyhounds who have a bit of a bald patch on their bottoms..

Class 7, Dog most like its owner, will certainly cause some hilarity (and occasionally a few marital disputes!) and Class 11, Best pair of six legs usually has a parade of lovely pins, both human and canine. Keen entrants come wearing shorts, but simply rolling up your trouser legs is usually sufficient.

The day starts at 11 a.m. and judging commences promptly at 1 p.m. The show area is located near the park café, which will be serving a variety of hot and cold drinks, refreshments, snacks and meals.

Water will be available for dogs and there are ample bins for dog waste and general litter. Spare poo bags will be available on the day.

## **Ring One - Companion Animal Show under KC Licence**

Entry £2 per class

Rosettes to 6<sup>th</sup> place

Class 1 – Best variety puppy (6 – 12 months) dog or bitch

Class 2 – Any variety sporting dog or bitch

Class 3 – Any variety non-sporting dog or bitch

Class 4 – Open dog or bitch

Class 5 - Best in show for 1<sup>st</sup> prize winners of Classes 1-4

## **Ring Two – Novelty Dog Show**

Entry £1 per class

Rosettes to 6<sup>th</sup> place (all entrants in child handler classes to receive a rosette)

Class 1 - Best greyhound dog

Class 2- Best greyhound bitch

Class 3 - Best lurcher dog

Class 4 - Best lurcher bitch

Class 5 - Best veteran greyhound or lurcher (over 8 years)

Class 6 - Best rescue dog (any breed or mixture)

Class 7 - Best veteran rescue dog (over 8 years)

Class 8 – Dog most like its owner

Class 9 – Baldie butt

Class 10 - Best child handler – up to 8 years

Class 11 - Best child handler – 9 to 14 years

Class 12 - Best pair of six legs

Class 13 - Waggiest tail

Class 14 – Best dog or bitch – non prize winner on the day

Last year, we were swamped on the day by entrants. This year, to try to smooth things out, we've introduced new entry forms for each of the two sets of classes. You can download the entry form from our website or by following the link below and fill it out in advance. If you would like a super speedy registration, download and complete the entry form and email it back to us – on the day, all you will need to do is confirm the dog's name and pay the amount owing.

[Click here to download entry forms](#)

If you do decide to enter on the day, please don't leave it

till the last minute especially if you are entering Class 1!

Postcode for satnav is SA16 0EJ

If you are able to help on the day, we need volunteers to assist. Could you spare a couple of hours to direct parking, help on the gate or assist with ring stewarding? If you can help please email us or call Penny on the number below.

Link to [Pembrey Country Park website](#)

For more information, check out our website or call Penny on 01269 861001

---

## Email addresses and contacts

National helpline and emergency number 0300 0123 999

Membership – queries, joining, renewal  
[join@greyhoundrescuewales.co.uk](mailto:join@greyhoundrescuewales.co.uk)

PR - Website updates – Alain Thomas  
[info@greyhoundrescuewales.co.uk](mailto:info@greyhoundrescuewales.co.uk)

Email newsletter views, queries and to add/remove names  
[Greyhoundwales@btinternet.com](mailto:Greyhoundwales@btinternet.com)

Secretary – Kathryn Woodhouse  
[greyhoundwales@btinternet.com](mailto:greyhoundwales@btinternet.com)